



ΚΕΡΑΜΕΙΟ ΚΑΚΟΓΙΑΝΝΗΣ ΛΤΔ  
Τ.Θ. 27365, 1644, Λευκωσία, Κύπρος  
06

01-CPR:01/07/2013

CYS EN 771-1:2011+A1:2015

CL KK200-1

P unit for use in protected masonry

-Category II-

**Dimensions:** Length 300mm, Width 200mm, Height 100mm

**Dimensional Tolerances:**

Tolerance Category: Tm: Length:  $\pm 15$ mm Width:  $\pm 10$  mm Height:  $\pm 5$ mm

Range Category: NPD

Flatness: NPD

Plane Parallelism: NPD

**Configuration:** As in drawing below

**Mean Compressive strength:** 1,1 N/mm<sup>2</sup> ( $\perp$  Bedface)(Cat II) / 1,1 N/mm<sup>2</sup> (Header)(Cat II)

**Dimensional stability:** Moisture movement: NPD

**Bond Strength:** Fixed value 0,15 N/mm<sup>2</sup>

**Active soluble salt content:** Category S0

**Reaction to fire:** Euroclass A1

**Water absorption:** Not to be left exposed

**Water vapour permeability:** 5/10

**Direct Airborne Sound Insulation:**

Gross dry density: 880 kg/m<sup>3</sup> (D1)

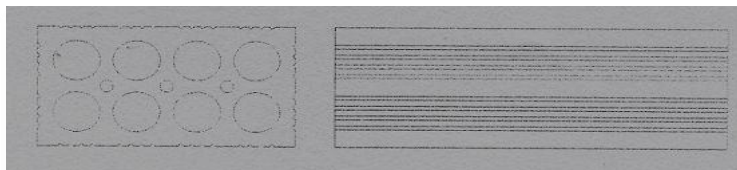
Configuration: As above

**Thermal conductivity:**  $\lambda_{\text{equ}} = 0,295$  W/mK ( $\lambda_{10,\text{dry,unit}}$ , P4 calculation according to EN 1745:2012)

**Durability against freeze-thaw:** Category F0 - Not to be left exposed

**Dangerous substances:** No Dangerous Substances

**Percentage of Voids:** max. allow 60%



Production Date: